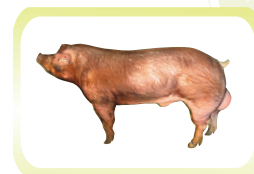


# XM™ TERMINAL SIRE

## PRODUCT SHEET



## XM TERMINAL SIRE

### Your Choice for Consistent Full Market Value

Some producers think XM stands for “**X**ceptional **M**eat,” and they could very well be right. Known for its excellent growth and appetite, the XM terminal boar contains a genetic package that results in excellent carcass lean characteristics. Just as important as meat quality and lean carcass, this Duroc-based sire shows robust performance in all environments. The progeny from XM also show robustness translating into low mortality.

### PERFORMANCE CONSISTENCY YOU CAN COUNT ON

Data showing average XM\* performance from over 4 years customer close-out data.

	2006	2007	2008	2009
AVG WEIGHT-IN (lbs)	54	57	59	57
AVG WEIGHT-OUT (lbs)	267	274	273	269
ADG	1.93	1.95	1.98	1.95
FCR	2.62	2.52	2.55	2.51
ADFI	5.05	4.91	5.04	4.90
% LIVABILITY	98	98	98	98

\*XM x SuperMom™ 37 customer finisher data from over 330,000 animals.

Customer close-out data over four year's time demonstrates the consistent performance of XM in crucial areas like ADG, FCR and livability.

## THE XM ADVANTAGE MEANS GREATER FULL MARKET VALUE

Recent benchmark data\* against competitor boar shows XM can provide great value in today's market.

	<b>XM</b>	<b>PIC 337</b>	<b>XM ADVANTAGE</b>
DAYS ON FEED**	156.25 <sup>a</sup>	158.70 <sup>b</sup>	2.5 days
172 DAY WEIGHTS	274.55 lb	269.75 lb	5 lb
FULL MARKET VALUE	96.93% <sup>a</sup>	92.40% <sup>b</sup>	4.5%
PER HEAD VALUE**	+ \$1.22	-	Greater Value

\*Bred to Genepacker 35 Maternal Line

\*\*Adjusted to 280 lb weight

<sup>a,b</sup> Differs significantly (P<0.05)

PIC is a registered trademark of Pig Improvement Company UK Limited

In recent benchmark performance testing adjusted to 280 pounds, XM provided a \$1.22 per head value (4.5%) over a leading competitor boar.

## THE SCIENCE BEHIND YOUR SUCCESS

Newsham Choice Genetics is committed to investing in innovation and providing you with industry-leading products that make your operation profitable. The XM terminal boar is just one example of how you can *Map Your Success* with Newsham Choice Genetics.

XM is a registered trademark of Newsham Choice Genetics.

PIC is a registered trademark of Pig Improvement Company (100 Bluegrass Commons, Blvd., Suite 2200, Hendersonville, TN 37075)



NOTICE: Actual results may vary based on production factors over which Newsham Choice Genetics has no control including, but not limited to, management, animal handling, nutrition, environment, and disease. While the information contained herein is presented in good faith and believed to be correct, Newsham Choice Genetics does not guarantee results from reliance on such information and disclaims all liability for any loss or damage arising from use of this information or to any products said information refers. Any warranties and remedies available are set forth in written contracts with Newsham Choice Genetics.

PS-3 12/09